

## Rotary Table RT2A 075

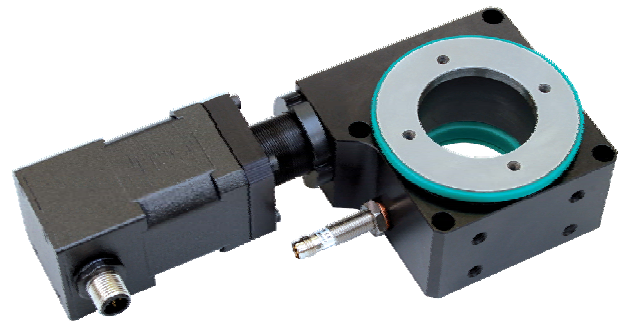
**Handling, Assembly Technologies,  
Machining Technologies, Laser Processing, etc.**  
... but also for your applications

- ✓ *maintenance-free*
- ✓ *completely sealed*
- ✓ *simple adjustment*

### Rotary Table RT2A 075

The series of RT2A 075 distinguishes by compact design with integrated precision roller bearing and worm drive.

The rotary table is completely sealed and can be operated in all fitted positions. For the mounting, standard drilling plans can be used. The limitation of rotation is realized with one limit switch (PNP-NC, 2 channel). The limit switch can be used also as reference point switch.



### Material

- Housing: Aluminium anodised black
- Rotary plate: Steel

### Bearing

- Integrated roller bearing with high moment rigidity and concentricity and axial run-out accuracy

### Drive

- Non self locking worm drive  $i=25:1$ , with easy adjust clearance
- Flanges and couplings are available for all common stepper and servo motors

### Ambient Temperature

- Ambient temperature at the operating location: +10 °C to +40 °C

### Protection Class

- Protection class IP 50 (Other protection classes on request)

### Lubrication

- Lifetime lubrication with input speed  $\leq 3000$  and  $ED \leq 20\%$ .
- Continuous operation and high dynamic applications on request

### Field of Applications

- Mounting technique, measure machines, laser writing, optical systems, welding, cutting, as well as special mechanical engineering

### Options

- Application on temperature range -40 °C to +80 °C
- Application on vacuum to  $10^{-6}$  Torr
- Reference point switch (PNP-NO, 1 channel)
- Limitation of rotation and reference point switch (PNP-NC or PNP-NO)

### Ordering Information

- Rotary table RT2A 075 | see additional side: RT2A ... order code

